

ICMR-DHR Large Animal House Facility, Center of Excellence



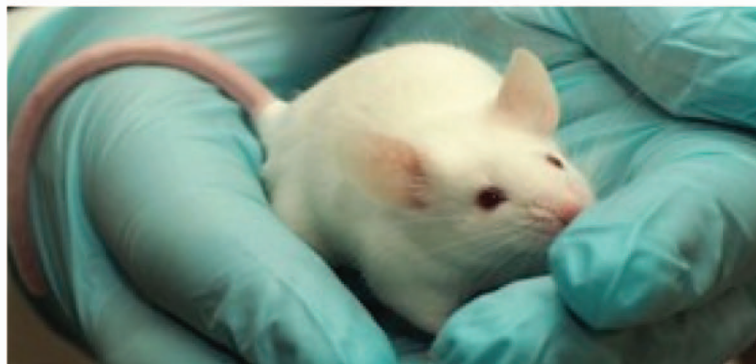
Animal Research Centre, the preclinical contract research arm of AMTZ is built in an area of 10,000 square feet at I- Hub Building of RCC Structure. The design of the setup is built on GLP norms with Classified facility compliant to ISO 14644-1 for Class 8 and Class 7 and the non-classified area is maintained with the highest standard of material and process flow. It is the Centre of excellence for undertaking toxicology / safety assessments, exploratory of non-GLP and GLP (post compliance) based studies, apart from clinical chemistry and related models and research.

ARC (CPCSEA Accredited) facility includes the capacity to handle different species of large animals in separate containment areas with their respective isolation, holding and quarantine rooms along with a fully equipped operation theater, a surgery and pre-surgery room attached with a laboratory, an Invitro lab, Clinical Chemistry lab, Analytical lab, Histopathology lab. The state-of-the-art infrastructure of the research facility includes cages to accommodate different animal species, Instruments include Haematology analyser, Biochemistry analyser, Histopathology equipment, OT & Anesthesia workstation, Heart Lung Machine, C-arm, Necropsy station, Blood Gas Analyzer, ACT Machine, Co-oximeter etc.



About us

- ICMR-DHR Large Animal House Facility, Center of Excellence (LAHF) is a full service Pre-clinical CRO offering drug development & discovery services to pharmaceutical & biotech companies across globe in accordance with OECD - GLP, AAALAC & IND guidelines. LAHF offers full battery of services in the areas of In vivo & In vitro toxicity studies
- LAHF offers Pharmacological investigations, Pharmacokinetic & toxicokinetic studies, Genotoxicity screening, Analytical services
- LAHF provides regulatory and non-regulatory IND enabling preclinical development services. We are capable of screening & evaluating molecules for various pharmacological & therapeutic properties. Specifically for oncology, our scientists can provide design & development of syngeneic / xenograft models for evaluation of anti-cancer agents.
- LAHF can customize In vivo DMPK studies to help profiling the drug candidate in both rodent and non-rodent animal models.



Toxicology

Pharmacology

Pathology

General Toxicology

- Dose Range Finding
- Maximum Tolerated Dose
- Acute (All Routes)
- Skin Sensitization
- Inhalation
- Dermal Irritation / Corrosion
- Eye Irritation / Corrosion
- Local Tolerance
- Cytotoxicity
- HET-CAM Test
- Sub Acute
- Sub Chronic
- Chronic
- Reproduction
- Carcinogenicity

Mutagenicity

- AMES Test
- Cell Gene Mutation Test
- Chromosomal Aberration Test
- Micronucleus Test

Xenograft Models

- Prostate Cancer
- Breast Cancer
- Lung Cancer
- Multiple Myeloma
- Colorectal Carcinoma (HT-29)
- Glioblastoma (U-87 MG)
- Ovarian Cancer

Syngeneic Models

- Breast Cancer (4T1)
- Melanoma (B16-F10)
- Colon Cancer (CT26.WT)

Other

- Anti-Fungal Efficacy Studies
- Psoriasis
- Full Thickness Skin Wound
- Colon Cancer (DMH Induced)
- Diet Induced Obesity (DIO)
- Thrombocytopenia
- Alopecia
- Immunogenicity Studies

Clinical Pathology

- Haematology (Multi-species)
- Coagulation Analysis
- Clinical Chemistry
- Electrolyte Analysis
- Urine Analysis

Histopathology

- Routine / Specialized Necropsy
- Tissue Processing
- Slide Preparation
- Routine (H&E)/ Special Staining
- Microscopic Imaging & Analysis
- Microscopic Evaluation
- Peer Review (On Demand)

OUR ACCOMPLISHMENTS

- CPCSEA Registration - Feb 1,2022
- DGFT License China (Beagle dogs-40 M 40 F) - April 28, 2022
- CPCSEA Approval for Expansion (80 Dogs, 26 Swines) - Sep 06, 2022
- DGFT License Japan (Beagle dogs- 40 M 40 F) - Nov 11,2022
- CPCSEA approvals for conducting studies on animals (Swines,Rabbit,Mice and Rats)- Sep 09,2023
- CPCSEA approval for Expansion (80 Sheep and 80 Goats) - Aug 22,2023
- CCSEA approval for Expansion of Mini Pigs (N=38) & Guinea Pigs (N=234) - May 24, 2024

MAJOR EQUIPMENT

- **BIOCHEMISTRY ANALYSER**
- **HAEMATOLOGY ANALYSER**
- **URINE ANALYSER**
- **TISSUE PROCESSOR**
- **AUTOMATED MICROTOME**
- **EMBEDDING STATION**
- **C-ARM**
- **X RAY UNIT**
- **ANAESTHESIA MACHINE**
- **HEART LUNG MACHINE**
- **VENTILATOR**
- **CARDIAC MONITOR**
- **CATH LAB**





BEAGLE DOG STUDIES

- ORAL AND INTRAVENOUS PHARMACOKINETIC STUDY IN BEAGLE DOGS
- SINGLE DOSE ORAL TOXICITY STUDY IN BEAGLE DOGS
- DOSE RANGE-FINDING STUDY IN BEAGLE DOGS BY ORAL AND INTRAVENOUS ROUTES.
- REPEATED DOSE 28 TO 180 DAYS TOXICOLOGY STUDIES IN BEAGLE DOGS
- IN-LAHF THROMBOGENICITY STUDY IN BEAGLE DOGS AS PER ISO 10993-4 REQUIREMENTS FOR VASCULAR MEDICAL DEVICES.

SWINE MODELS

- FULL THICKNESS EXCISION/BURN/INCISION WOUND MODEL IN SWINE.
- SAFETY AND PERFORMANCE EVALUATION OF CARDIAC STENT IN SWINE
- CHECKING PERFORMANCE CHARACTERISTICS OF DIALYSIS MACHINES USING SWINE
- DEVELOPMENT OF STAND ALONE SWINE MODELS FOR SAFETY AND PERFORMANCE EVALUATION OF MEDICAL DEVICES
- MECHANICAL HEMOLYSIS OF HEMODIALYSIS TUBING SETS USING HUMAN BLOOD ON DIALYSIS MACHINE.

SHEEP AND GOAT MODELS

- CARDIAC DEVICE
- DRUG TESTING

SMALL ANIMAL STUDIES (RABBIT, MICE, RAT ETC)

- GENERAL TOXICOLOGY
- MUTAGENICITY
- XENOGRAFT MODELS
- SYNEGENIC MODELS
- CLINICAL PATHOLOGY
- HISTOPATHOLOGY

Contact Us:

Animal Research Centre, I-Hub Building Ground Floor, Pragathi Maidan, AMTZ Campus, VM Steel Project S.O,
Visakhapatnam, Andhra Pradesh-530031

Phone : 7901493786 : Email ID: preclinicaltesting@amtz.in