

CE  
2265



# Pinnacle Agile<sup>®</sup> with enhanced mobility options



Pinnacle Agile<sup>®</sup>, one of the most versatile cath labs in the market

Agile gives Interventionalists the freedom to do any Cardiovascular, Neurovascular and Peripheral Vascular Procedure with Ease.

## Sharp, High Resolution Clinical Images

Visualise the most distal and tortuous vessels with our High Definition Flat Panel Detector, a First-in-Industry

## A.S.P.I.R.E<sup>®</sup> Advanced Supercomputing Based Pinnacle Resolutions

Proprietary Super Computing Algorithms used for the first resulting in the sharpest image quality for the first time resulting in the sharpest image quality



# Variable Source to Image Distance

Now take deeper angles with greater ease with up and down movement of the flat panel detector.



## Full Body Coverage

Agile gives you the unmatched advantage of doing Neurovascular to Tibial Interventions on the same table. Presenting Class Leading table sweep length offering head-to-toe coverage for a 6 feet tall patient

## Table Swivel

Now Perform Trans Radial procedures and CPR without worrying about table obstructing the field of operation

## Lower Table Height

Now able-bodied patients can sit up and sit out of the table without the need for a patient trolley. Class-leading minimum table height to facilitate ease of patient transfer.

## A.S.P.I.R.E.<sup>®</sup> IMAGE QUALITY

“Advanced Supercomputing Based Pinnacle Image Resolution”

Using the power of Supercomputing Algorithms for the first time in Medical X-Ray Imaging to produce the Sharpest and Virtually Noise Free Images at the lowest Dose

## Smallest Footprint

The World's Smallest, Fixed, Flat Panel Cath Lab – Save the expensive Civil Work and experience the Award-winning installation time – we value your time and resources.

## Tab Based User Interface

Experience the comfort of using an Industrial grade Tab for entire Patient Related Workflow. Now starting a new study, controlling the screen GUI and all image processing features are literally at your fingertips. Creating the most user friendly UI so that you can focus on what matters most.

# Versatility at it's Best



We appreciate that visualising distal vasculature can be critical in clinical decision making

## Cardiovascular Suite

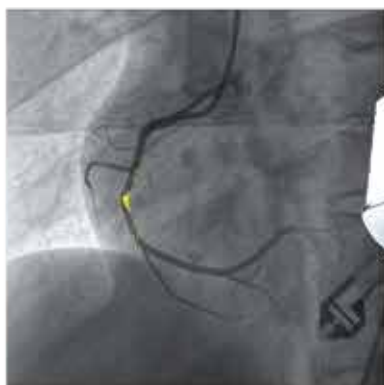
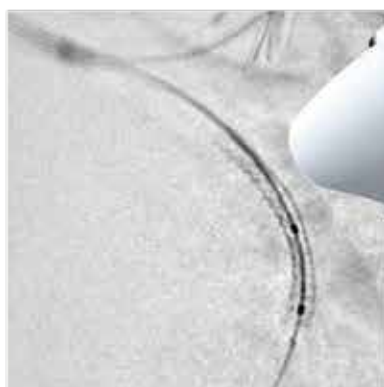
Now visualise distal and tortuous vessels better than ever before with World's first HD Flat Panel Detector. A Higher Resolution detector ensures sharper images in the most distal anatomy

### Stent Clarity<sup>®</sup> and QCA

Visualise the entire stent with Stent Clarity<sup>®</sup> in high resolution. Now no need to take large cine loops to perform Software Stent Enhancement. With Stent Clarity<sup>®</sup>, you can do an effective enhancement with as low as 24 frames

## Neuro Vascular and Peripheral Vascular Suite

Pinnacle comes pre-loaded with proprietary DSA and Roadmap Software developed in-house. A larger 9-inch detector panel ensures a better field of view and reduces the need to take multiple shots. The 55-inch monitor helps play up to 4 Reference Loops alongside the Live window, especially helpful in some complex peripheral vascular procedures. Variable Frame Rates ( as low as 3 frames per second) to perform long DSA procedures without worrying about dose.



## Detector

Flat Panel 12" diagonal, 21 cm x 21 cm, Pixel Size 154 $\mu$ m, Image Matrix 1344 x 1344,  
16-bit Dynamic range, DQE - 77%.

## Gantry

Floor mount, ISO Centric, left side-mounted, Orbital Speed: Up to 25 deg/sec,  
Angulation Speed: up to 25 deg./sec, Angular Stroke: -45 deg. to +45 deg.,  
Orbital Stroke: +90 to -45 deg., C arm Depth - 85.3 cm, Variable SID: 96-116 cm

## Monitor

55" 4K UHD, 3840x2160 Display matrix, ceiling suspended

## Monitor Ceiling Suspension (MCS)

MCS can be positioned on three sides of the patient. Spring balanced Height Adjustment.

## Image Acquisition System

Fluoroscopy, Roadmap, Cine, DSA, Low Dose Fluoroscopy mode, Fluoro Save Option,  
All the modes are configurable to 3,6,9,12,15,25 frame/sec frame rate.  
Image Storage - 150000 + images.

## External System Integration

Haemo Monitor Integration

## UI Modules

Table Control Module, C- arm & Imaging Control Module Tablet  
Based Software Control Module.

## Acquisition Modes

Pulsed Fluoroscopy, Cine, DSA, Roadmap, Low Dose Fluoroscopy.

## Software Processing Options

16-bit image processing pipeline, Adaptive noise reduction and contrast  
enhancement, Mask overlay, pixel shift, Zoom, Pan, Mirroring, Rotation,  
QCA and Stent Enhancement.

## Environmental

Input Power : 400-415 VAC, 65KW, 3 Phase, 50Hz Mains Line impedance < 0.15

Operating Temperature 15°- 30°, Operating Humidity 30% - 75%



## Collimator

Square Lead Shutter, Heart Profile soft Cu Shutter, Variable Cu Filters

## Workstation

150000 +Images, DICOM CD/DVD Writing, Store to PACS, Backup to external hard disk

## Dose Awareness

Relevant dose information such as cumulative dose, Dose rate, Cumulative DAP and DAP rate on the Live monitor in the exam room. Cumulative dose information provided on the review monitor in the control room is DICOM Radiation Dose Structured Report.

## Generator

65 KW High-frequency X-Ray generator, 40 - 125 KV, Max current 630mA @100 KV.

## X-Ray Tube Assembly

125 Kv, Rotating Anode, Metal center tube, 0.6/1.0 Focal spot, 60/112 Kw anode input power, 1.5 MHU, Oil Cooled with external Heat Exchanger with the flow and thermal safety switch. Total filtration 9.5 mm Al Eq.

## Table

Carbon Fiber Tabletop, Memory Foam Mattress, Max Patient Weight ·200 Kg, Minimum Height 780 mm, Vertical stroke: 300 mm. Table longitudinal stroke: 1350 mm, Table Lateral stroke: 300 mm. Table Pivot movement : -15° to +90°

## DICOM Interface

DICOM Print. CD/DVD Export. Structured Dose Reporting.

PINNACLE



***PRO***